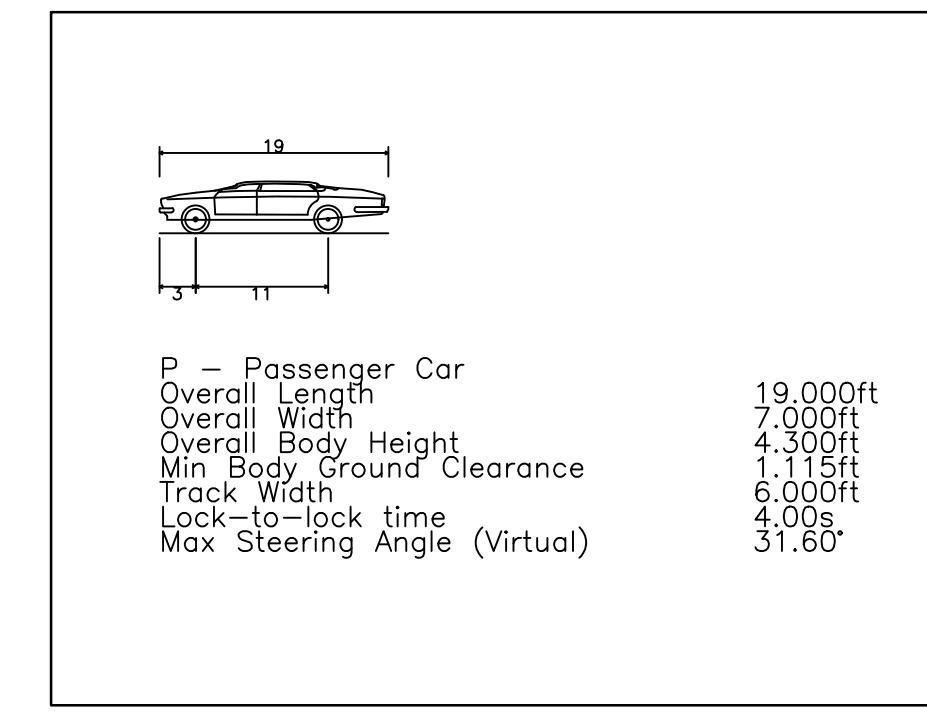
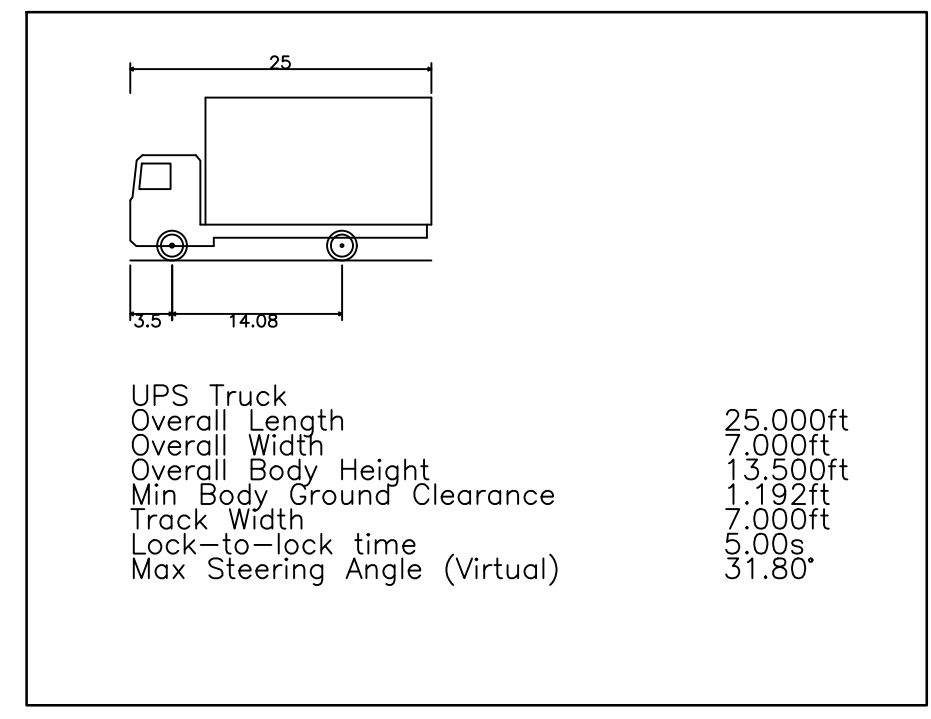
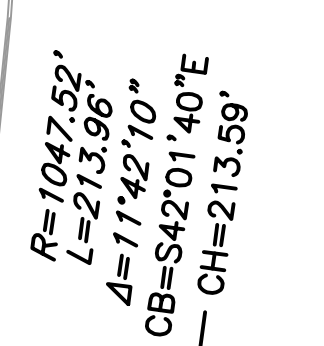
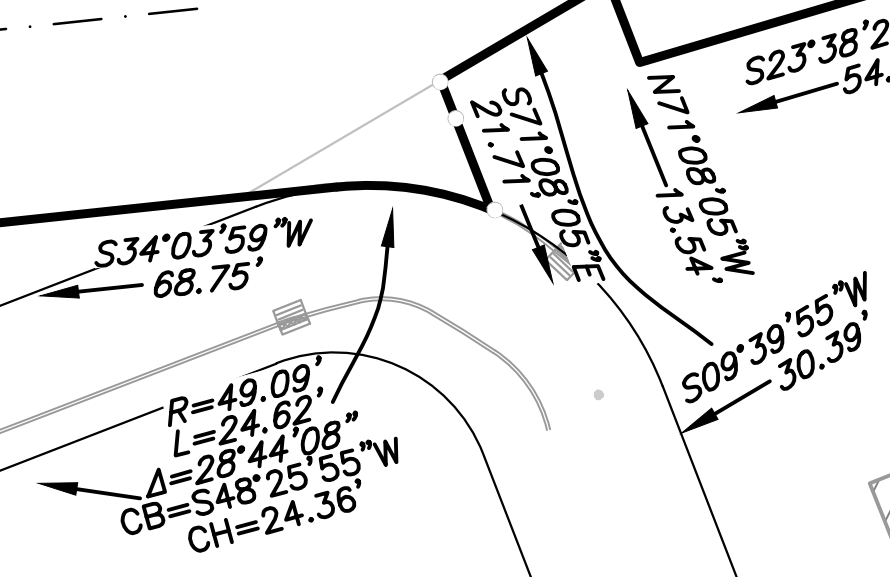
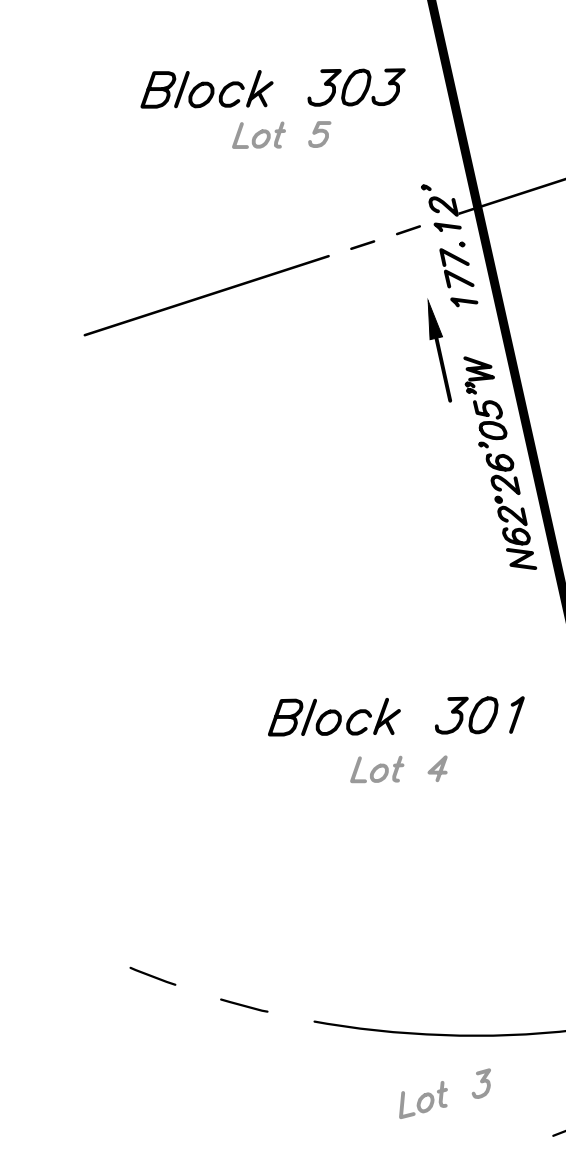
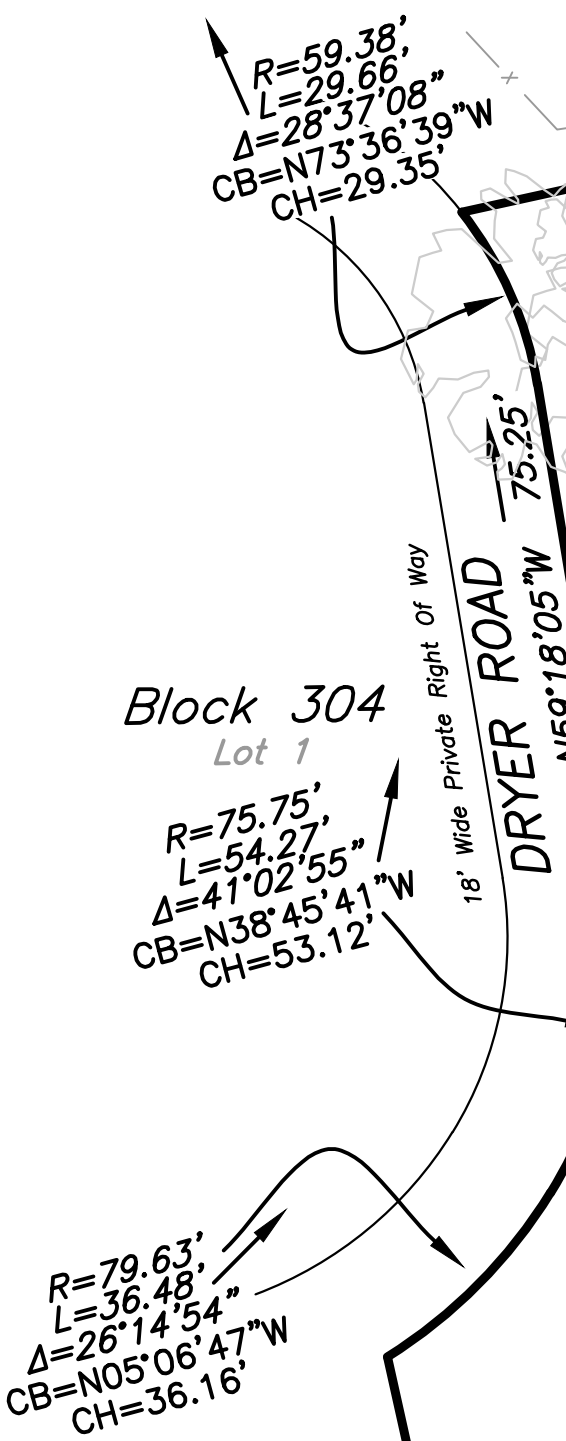
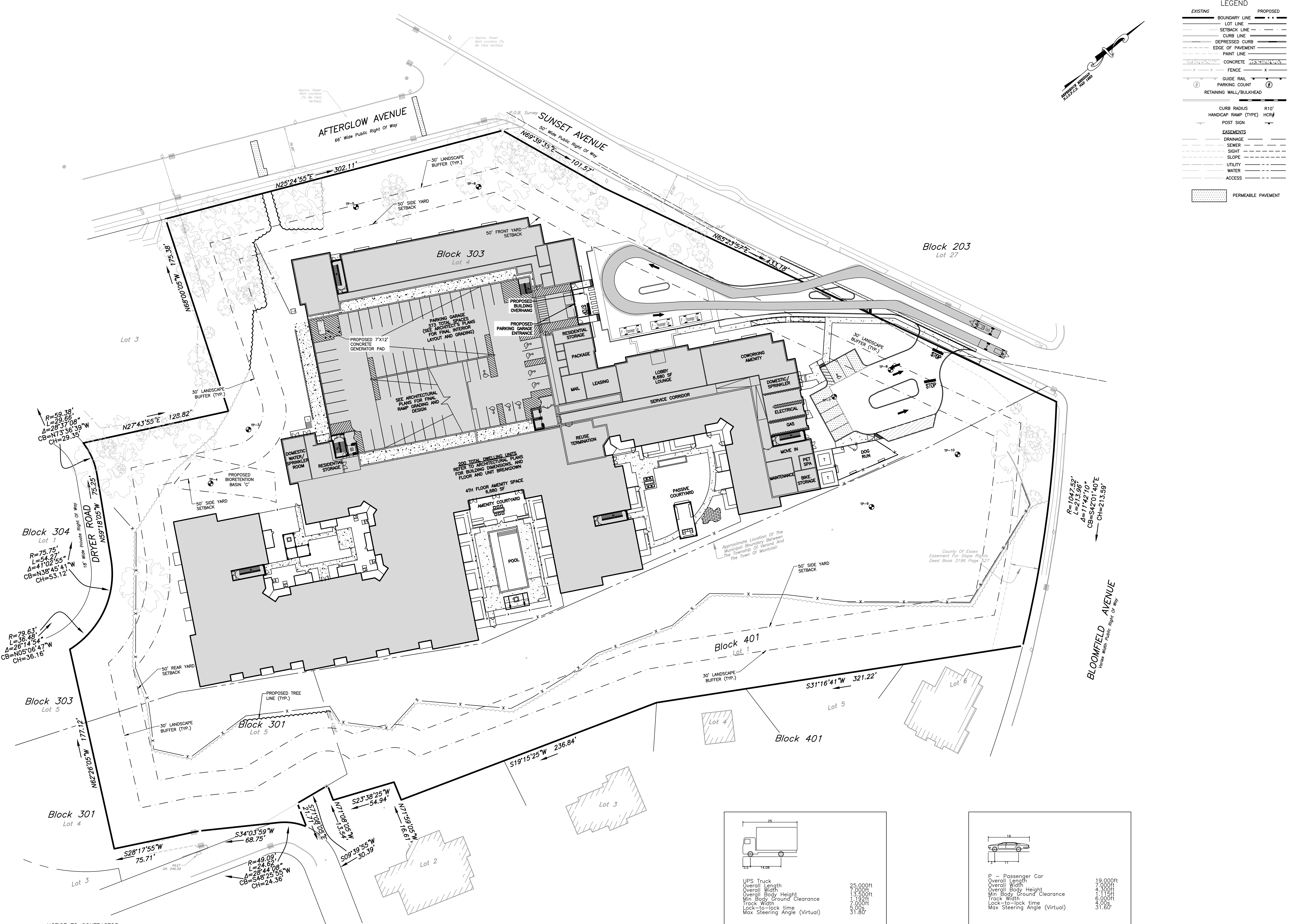
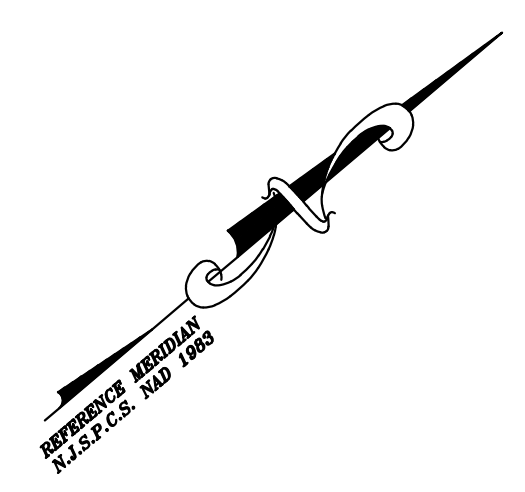


Plotted: 1/11/2023 9:30 AM. By: Tori Massara
 © MATRIXNEWORLD Matrix LDC\jps\BNE Real Estate Group\19-720 - Verona Site\DWG\misc\ Truck Turning Plans (December 2022)\UPS Truck Turning Exhibit.dwg\UPS TRUCK

LEGEND

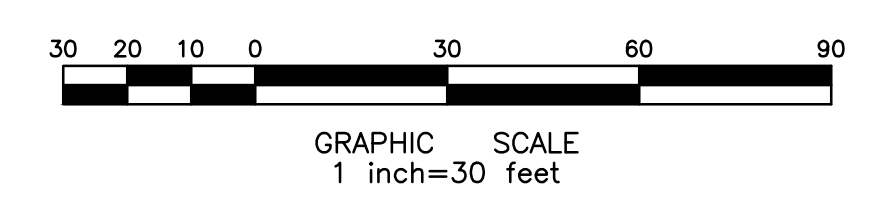
EXISTING	PROPOSED
BOUNDARY LINE	BOUNDARY LINE
LOT LINE	LOT LINE
SETBACK LINE	SETBACK LINE
CURB LINE	CURB LINE
DEPRESSED CURB	DEPRESSED CURB
EDGE OF PAVEMENT	EDGE OF PAVEMENT
PAINT LINE	PAINT LINE
CONCRETE	CONCRETE
FENCE	FENCE
GUIDE RAIL	GUIDE RAIL
PARKING COUNT	PARKING COUNT
RETAINING WALL/BULKHEAD	RETAINING WALL/BULKHEAD
CURB RADIUS	R10'
HANDICAP RAMP (TYPE)	HCR#
POST SIGN	
EASEMENTS	
DRAINAGE	
SEWER	
SIGHT	
SLOPE	
UTILITY	
WATER	
ACCESS	
	PERMEABLE PAVEMENT



NOTICE TO CONTRACTOR

ATTENTION OF THE CONTRACTOR IS DIRECTED TO THE FACT THAT THE APPROXIMATE LOCATIONS OF KNOWN UTILITY STRUCTURES AND FACILITIES THAT MAY BE ENCOUNTERED WITHIN AND ADJACENT TO THE LIMITS OF WORK AREA ARE SHOWN ON THE PLANS. THE ACCURACY AND COMPLETENESS OF THIS INFORMATION IS NOT GUARANTEED BY THE ENGINEER, AND THE CONTRACTOR IS ADVISED TO VERIFY, IN THE FIELD, ALL THE FACTS CONCERNING THE LOCATION OF THESE UTILITIES AND OTHER CONSTRUCTION OBSTACLES PRIOR TO THE START OF CONSTRUCTION. FURTHER, THE CONTRACTOR SHALL NOTIFY THE ENGINEER, IN WRITING, PRIOR TO THE START OF CONSTRUCTION, OF ANY DISCREPANCIES WHICH MAY EFFECT THE PROJECT DESIGN.

THE CONTRACTOR SHALL CONTACT NEW JERSEY ONE CALL (1-800-272-1000 OR LATEST NUMBER) FOR UTILITY MARKOUT ERROR TO THE START OF CONSTRUCTION.



DESIGNED BY:	REVIEWED BY:	RELEASED BY:	NO.	DATE	DESL.	REV.	REL.
<p>MATRIXNEWORLD Engineering Progress</p> <p>Matrix New World Engineering, Land Surveying and Landscape Architecture, P.C. 442 State Route 35, Second Floor Edinstown, New Jersey 07724 www.matrixnewworld.com Tel: 732-588-2999 Fax: 973-241-7818 www.matrixnewworld.com NEW JERSEY CERTIFICATE OF AUTHORIZATION No. 24684782200 ESSEX COUNTY, NEW JERSEY</p>							
<p>UPS TRUCK TURNING EXHIBIT MODIFIED CIRCLE</p> <p>VERONA SUNSET URBAN RENEWAL, LLC BLOCK 303, LOT 4, TOWNSHIP OF VERONA BLOCK 301, LOT 5 AND BLOCK 401, LOT 1 - TOWNSHIP OF MONTCLAIR ESSEX COUNTY, NEW JERSEY</p>							
PROJECT NUMBER: 19-720							
DATE: 12/21/22							
SCALE: 1" = 30'							
SHEET 1 OF 1							